



**Algas-SDI**<sup>TM</sup>  
...Innovative liquid vaporizing and gas mixing solutions

ISO 9001  
Certified

# XPM

*Packaged Natural Gas Replacement System  
Models XPM2.5 through XPM14.0*



- Complete natural gas replacement system for commercial and small industrial natural gas users.
- Allows you to take advantage of discounted natural gas rates.
- Guarantees your fuel supply when your neighbor gets cut off.
- Combination of the ASDI POWER<sup>®</sup> XP electric vaporizer and VAPORAIRE<sup>®</sup> Venturi Air/Gas Mixer.
- Packaged as a single unit to save on installation and provide maximum reliability and convenience.
- Footprint is smaller than 2ft<sup>2</sup>.
- Explosion proof design means it can be installed anywhere.
- Able to make synthetic natural gas in less than one minute.

# Specifications

Capacity Million BTU/hr	XPM Model	Delivery Pressure psig (kg/cm <sup>2</sup> )	Min. LPG Pressure psig (kg/cm <sup>2</sup> )	Estimated Shipping Weight	Est. Shipping Dimensions L x W x H	Min. Required Accumulator Tank Capacity
2.5	XPM2.5-5	4 (0.28)	28 (2.0)	200	32" x 20" x 56"	120
	XPM2.5-8	8 (0.56)	88 (6.2)	200	32" x 20" x 56"	120
5	XPM5-5	5 (0.35)	31 (2.2)	200	32" x 20" x 56"	120
	XPM5-8	8 (0.56)	74 (5.2)	200	32" x 20" x 56"	120
	XPM5-12	12 (0.84)	136 (9.6)	200	32" x 20" x 56"	120
7	XPM7-5	5 (0.35)	47 (3.3)	200	32" x 20" x 56"	120
	XPM7-8	8 (0.56)	74 (5.2)	200	32" x 20" x 56"	120
	XPM7-12	12 (0.84)	123 (8.6)	225	32" x 20" x 56"	120
9	XPM9-10	10 (0.70)	97 (6.8)	225	32" x 20" x 58"	120
	XPM9-12	12 (0.84)	117 (8.2)	225	32" x 20" x 58"	120
10.5	XPM10.5-5	5 (0.35)	50 (3.5)	225	32" x 20" x 58"	120
	XPM10.5-8	8 (0.56)	80 (5.6)	225	32" x 20" x 58"	120
	XPM10.5-12	12 (0.84)	126 (8.9)	250	32" x 20" x 58"	120
13	XPM13-10	10 (0.70)	113 (7.9)	250	32" x 20" x 65"	240
14	XPM14-5	5 (0.35)	55 (3.9)	250	32" x 20" x 65"	240
	XPM14-8	8 (0.56)	85 (6.0)	250	32" x 20" x 65"	240

# Electrical

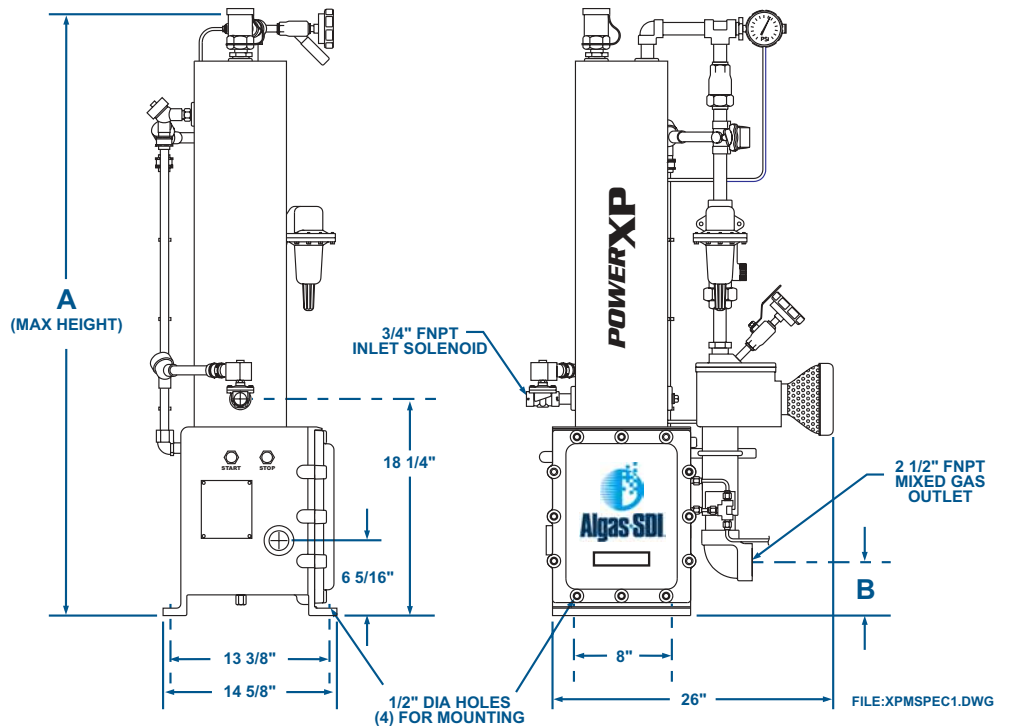
Model	208		220		240		380		415		440		480		575	
	KW	AMPS	KW	AMPS	KW	AMPS	KW	AMPS	KW	AMPS	KW	AMPS	KW	AMPS	KW	AMPS
XPM2.5-5	17.9	49.7	20.0	52.6	23.8	57.3	20.0	30.3	23.8	33.1	20.0	26.3	23.8	28.7		
XPM2.5-8	17.9	49.7	20.0	52.6	23.8	57.3	20.0	30.3	23.8	33.1	20.0	26.3	23.8	28.7		
XPM5-5	17.9	49.7	20.0	52.6	23.8	57.3	20.0	30.3	23.8	33.1	20.0	26.3	23.8	28.7		
XPM5-8	17.9	49.7	20.0	52.6	23.8	57.3	20.0	30.3	23.8	33.1	20.0	26.3	23.8	28.7		
XPM5-12	17.9	49.7	20.0	52.6	23.8	57.3	20.0	30.3	23.8	33.1	20.0	26.3	23.8	28.7		
XPM7-5			52.6	23.8	57.3	20.0	30.3	23.8	33.1	20.0	26.3	23.8	28.7			
XPM7-8			52.6	23.8	57.3	20.0	30.3	23.8	33.1	20.0	26.3	23.8	28.7			
XPM7-12						30.0	45.5	35.7	49.6	30.0	39.4	35.7	42.9			
XPM9-10						30.0	45.5	35.7	49.6	30.0	39.4	35.7	42.9			
XPM9-12						30.0	45.5	35.7	49.6	30.0	39.4	35.7	42.9			
XPM10.5-5						30.0	45.5	35.7	49.6	30.0	39.4	35.7	42.9			
XPM10.5-8						30.0	45.5	35.7	49.6	30.0	39.4	35.7	42.9			
XPM10.5-12						39.5	59.6	39.5	54.8	39.5	51.8	39.5	47.5	39.5	39.4	
XPM13-10						39.5	59.6	39.5	54.8	39.5	51.8	39.5	47.5	39.5	39.4	
XPM14-5						39.5	59.6	39.5	54.8	39.5	51.8	39.5	47.5	39.5	39.4	
XPM14-8						39.5	59.6	39.5	54.8	39.5	51.8	39.5	47.5	39.5	39.4	

**NOTE:**

- Capacity is based on a nominal mixed gas gross heating value of 1450 BTU/SCF +/- 5% with commercial grade propane. Actual capacity and mixed gas heating value may vary slightly based on installation and operating conditions.
- Delivery pressures shown are valid up to 2,000 ft elevation. Contact factory for information regarding applications at higher elevations.
- Capacities are based on 100% propane. For butane models, contact factory.

# Dimensions

MODEL	A	B
XPM2.5-5	50"	6 1/2"
XPM2.5-8	50"	6 1/2"
XPM5-5	50"	6 1/2"
XPM5-8	50"	6 1/2"
XPM5-12	50"	6 1/2"
XPM7-5	50"	4 1/2"
XPM7-8	50"	3 1/2"
XPM7-12	52"	6 1/2"
XPM9-10	52"	3 1/2"
XPM9-12	52"	3 1/2"
XPM10.5-5	52"	4 1/2"
XPM10.5-8	52"	3 1/2"
XPM10.5-12	59"	3 1/2"
XPM13-10	59"	6 1/2"
XPM14-5	59"	3 1/2"
XPM14-8	59"	3 1/2"



LPG VAPOR PRESSURE REQUIREMENT DATA FOR PROPANE			
Mixed Air/Propane Delivery Pressure (psig)	Min. Inlet Vapor Pressure (psig)	Nozzle Motive Pressure (psig)	
5	35 - 55	28-43	
8	75 - 90	67-42	
10	100 - 125	95 - 115	
12	120 - 150	115 - 135	

**Contact factory for additional information**

## Features

- Explosion proof configuration meets Class I, Division 1, Group D as defined by NFPA Pamphlets 58 and 70.
- Thermal efficiency exceeds 98%.
- UL stamped safety relief valve 250 psig.
- Simple push-button operation.
- Adjustable mixed gas delivery pressures are available between: 4-5 psig, 6-8 psig, 9-10 psig, and 11-12 psig for propane.
- 100% turndown capability on all models.

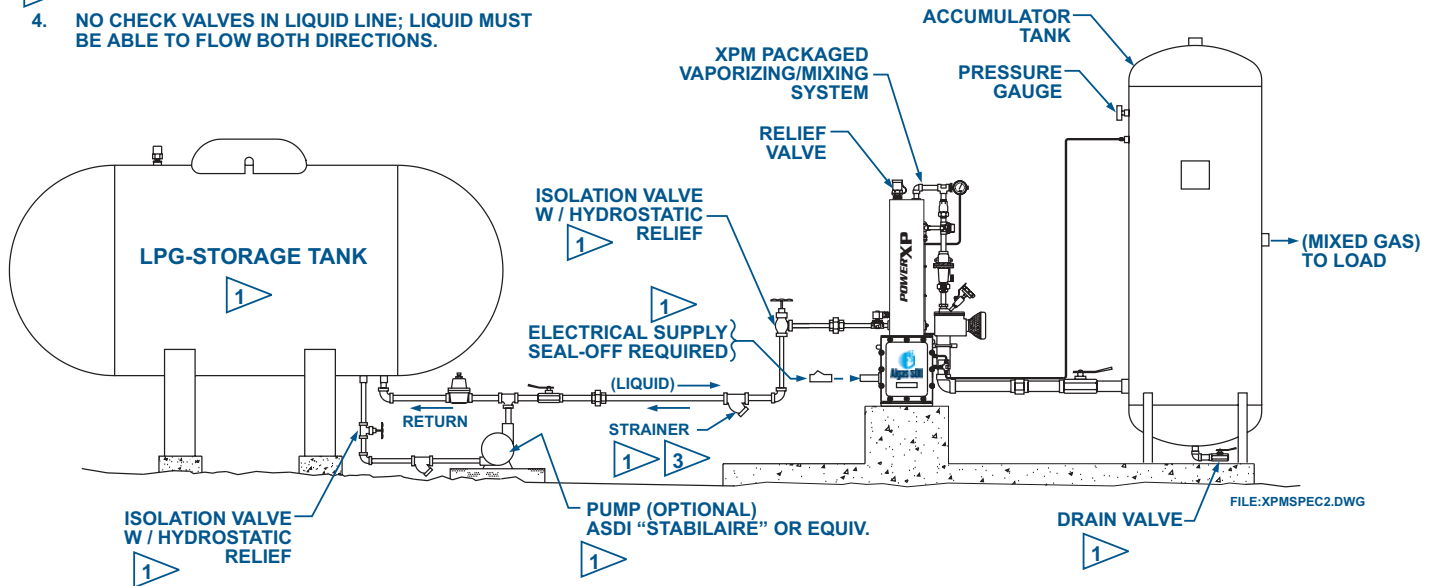
- Low vapor pressure safety switch prevents rich mixtures from developing.
- Two or more units can easily be operated in parallel to meet the growing requirements of your business.
- High mixed gas pressure safety switch prevents over pressurization of mixed gas accumulator tank.
- Shipped complete with all operating and safety controls.

## Options

- Auto Restart.
- Remote Control Panel.
- Spare Parts Kit.
- Venturi Silencer.

NOTES

- 1 BY OTHERS.
2. INSTALL SYSTEM PER NFPA 58, 70 AND OTHER APPLICABLE CODES.
3. INSTALL MAGNET FOR IRON PARTICAL PICK UP.
4. NO CHECK VALVES IN LIQUID LINE; LIQUID MUST BE ABLE TO FLOW BOTH DIRECTIONS.



XPM<sup>®</sup> is a registered U.S. trademark of Algas-SDI.



Home Office:

1140 NW 46th Street  
 PO Box 70498  
 Seattle, Washington 98107 USA

Tel: 206.789.5410  
 Fax: 206.789.5414

e-mail: sales@algas-sdi.com  
 internet: www.algas-sdi.com

Represented By:



2410 East 38<sup>th</sup> Street  
 Minneapolis, MN 55406-3018 USA

Tel: 612.721.4473  
 Fax: 612.724.8434

E-mail: info@standby.com  
 Internet: http://standby.com



Form: XPM0401